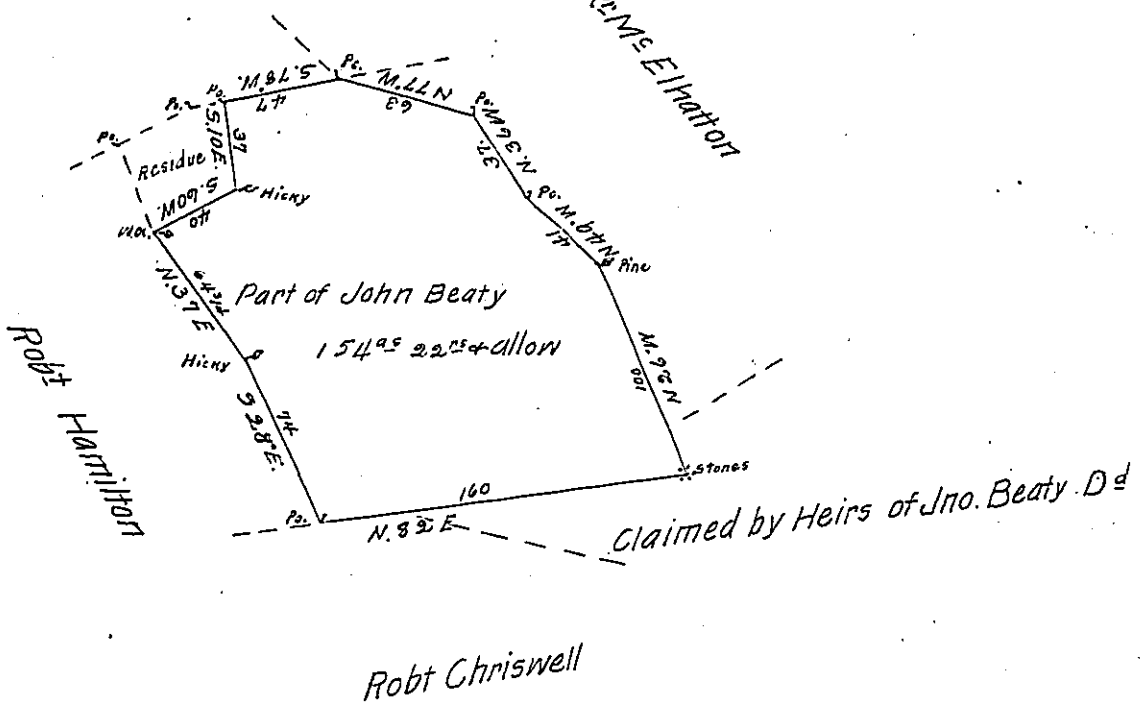


And<sup>r</sup> Bratton

Alex<sup>r</sup> McEllatton



Robt Chriswell

A Draught of one hundred fifty four acres, twenty two perches of land, & the usual allee of six p Cent for roads &c Situate in Wayne township Mifflin County, and appears to have been Survd<sup>d</sup> 11<sup>th</sup> Dec<sup>r</sup> 1773 on Warrant to John Beaty dated 21<sup>st</sup> October 1772. Examined & divided as above shown 15<sup>th</sup> & 19<sup>th</sup> of June 1823 at the request of James Chriswell & Robert Torrey Exec. of John Beaty Dec<sup>d</sup> &c

per Robert Robinson D<sup>d</sup>

To Samuel Cochran Esq<sup>r</sup>  
Surveyr Gen<sup>l</sup> of Penna.

IN TESTIMONY that the above is a copy of the original remaining on file in the Department of Internal Affairs of Pennsylvania, made conformably to an Act of Assembly approved the 16th day of February, 1833, I have hereunto set my Hand and caused the Seal of said Department to be affixed at Harrisburg, this Seventh day of December 1903

*Isaac P. Brown*  
Secretary of Internal Affairs.